

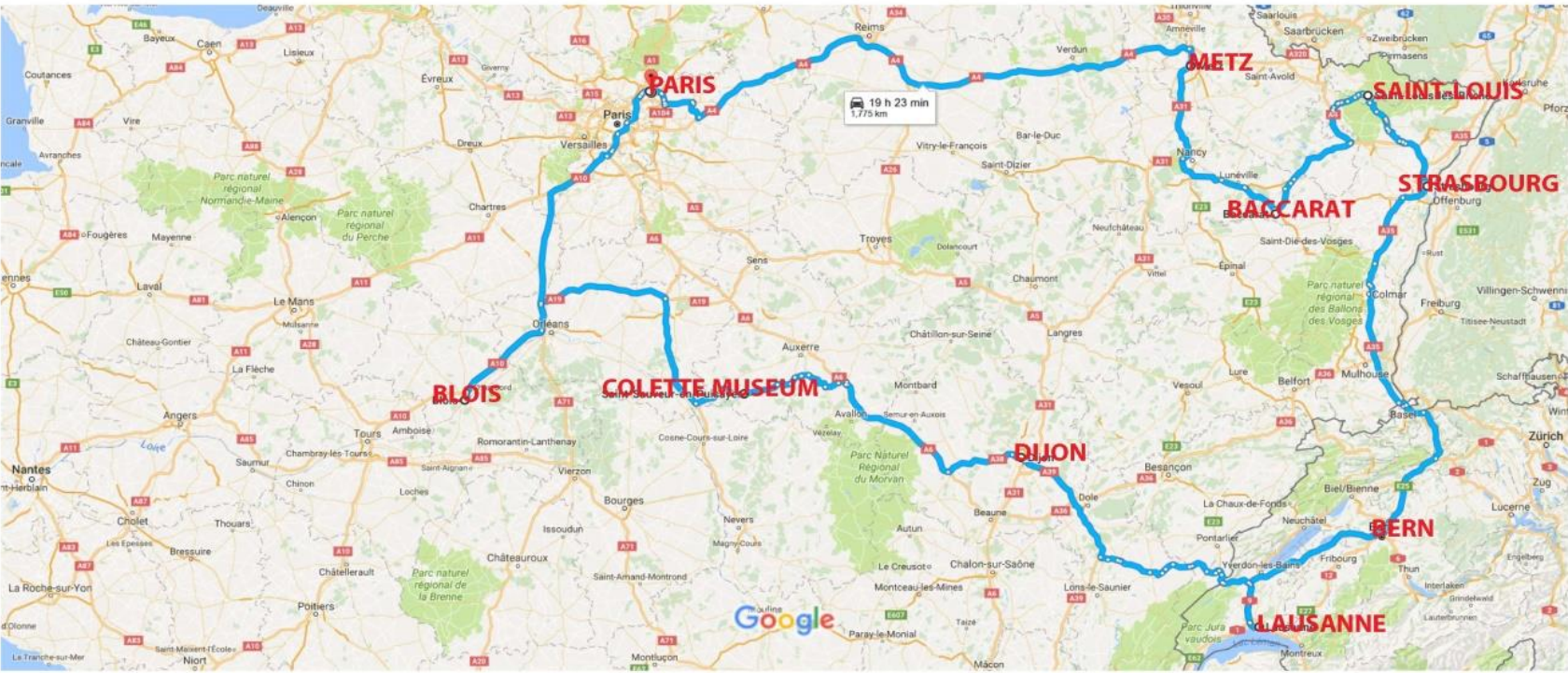
# GLASS IN FRANCE

2016



### Paris-Charles de Gaulle Terminal 2D to Aéroport de Paris Charles de Gaulle - Terminal 2E

Drive 1,775 km, 19 h 23 min



Map data ©2016 GeoBasis-DE/BKG (©2009), Google 20 km

# Le Louvre, Paris

## Musee des Arts Decoratifs

- Classic period examples 1845-1860
- Representative of French factories
- St. Louis, Baccarat, Clichy, Pantin

# Musee des Arts Decoratifs

**St. Louis**



**Clichy**



# Musee des Arts Decoratifs

**St. Louis**



**Pantin**



# Musee des Arts Decoratifs

**Baccarat**



**Clichy**



# 93<sup>e</sup> Foire de Chatou

- 23 Septembre – 2 Octobre 2016
- 10h – 19h
- Ile des Impressionistes, Chatou on the outskirts of Paris (via RER)
- 700 stands and galleries d'art
- Experts available

# Foire de Chatou





# Foire de Chatou



# Foire de Chatou



# Foire de Chatou



- Antique St. Louis decanter, stopper with upright lampwork bouquet.
  - Said to have been from the collection of Colette
- Antique St. Louis millefiori
- Antique French concentric
- Antique Baccarat scramble



# Marche aux Puces St. Ouen, Paris



# Marche aux Puces St. Ouen, Paris

St. Louis 1975  
King Tut Mask Sulphide

900 Euros  
CDN \$1,308



# Jean & Francoise Wurtz









# Magnum Clichy Chequered

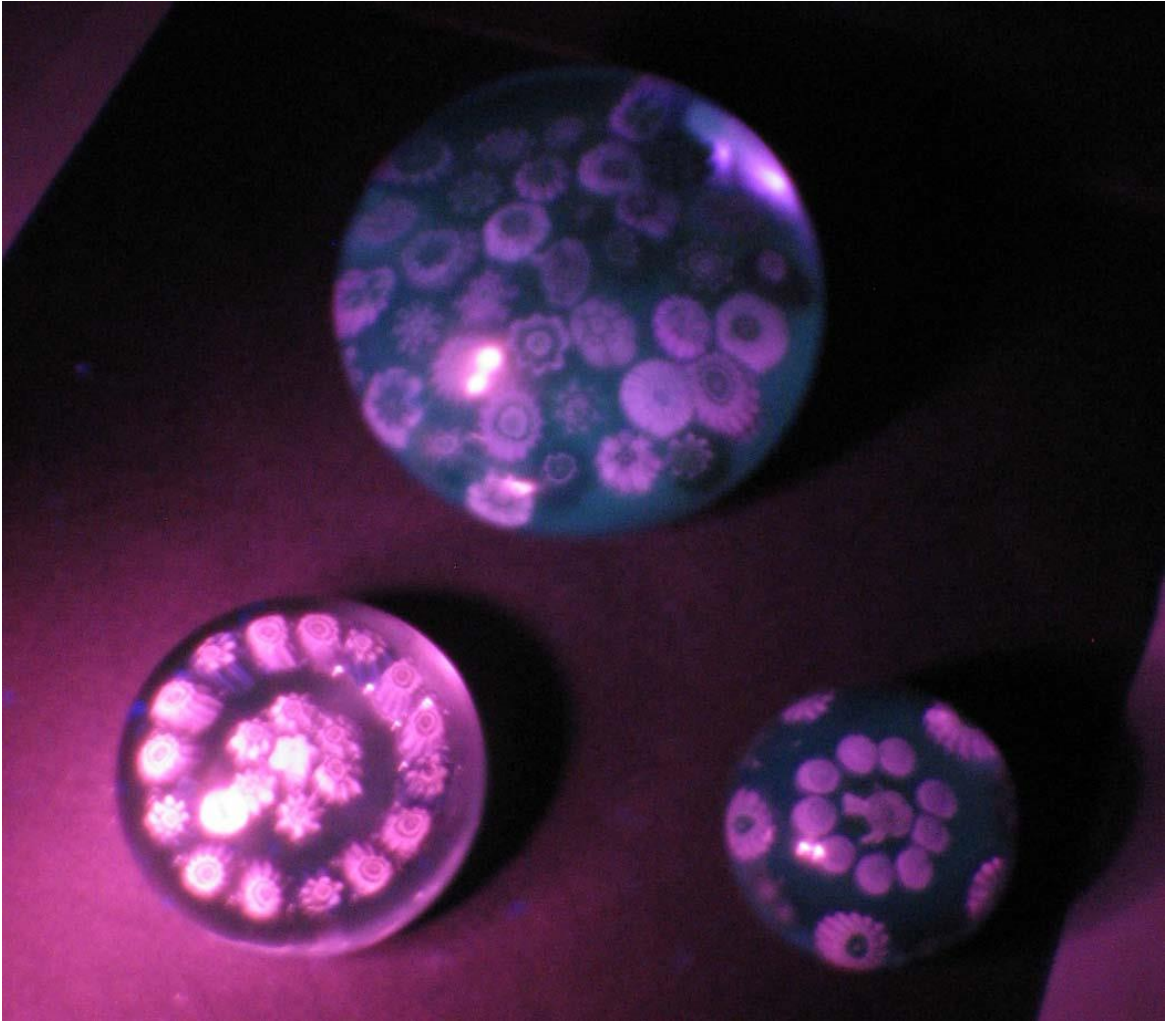


# Legion of Honour Tumbler 1830-1849









# Baccarat



# Musee de Cristal





# Musee de Cristal, Baccarat



# Musee de Cristal, Baccarat



**And Now .....**

Paperweights, of course !!



















# Auberge des Mesanges Meisenthal, France



# Meisenthal



# Meisenthal



# Meisenthal Glass-Making Site



# Centre Internationale d'Art Verrerie





# Meisenthal Glass-Making Museum



# Meisenthal Glass-Making Museum



# Meisenthal Glass-Making Museum



# Meisenthal Glass-Making Museum



# Meisenthal Glass-Making Museum



# Special Treats In Store



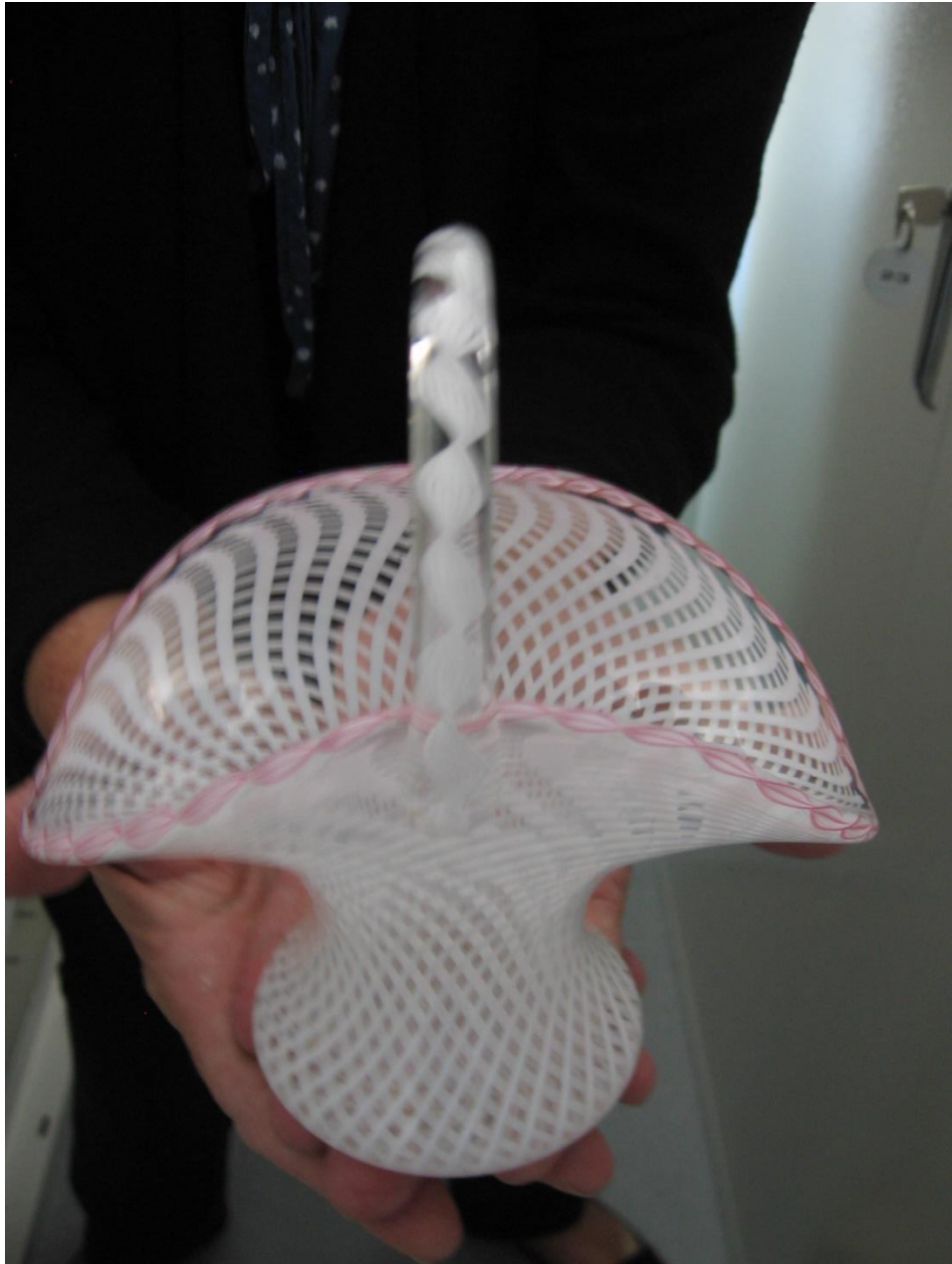


















# Centre Internationale d'Art Verrerie



# Saint-Louis





# Saint-Louis



# La Grande Place Musee de Cristal Saint-Louis



























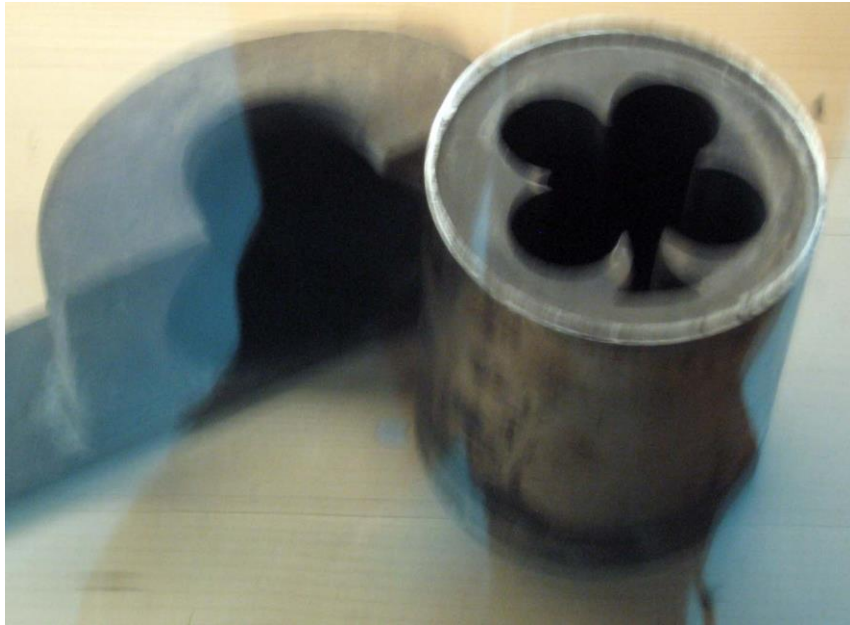




# Early Paperweight Collectors

- Empress Eugenie  
(wife of Napoleon III)
- Empress Carlotta (wife  
of Mexican Emperor  
Maximilian)
- Queen Victoria
- Queen Mary
- French writer, Colette
- Oscar Wilde
- Truman Capote
- King Farouk
- Col. Robt. Guggenheim
- Eva Peron
- Amory Houghton  
(Corning Glass)
- Evangeline Bergstrom
- Paul Jokelson (founded  
PCA in 1954)



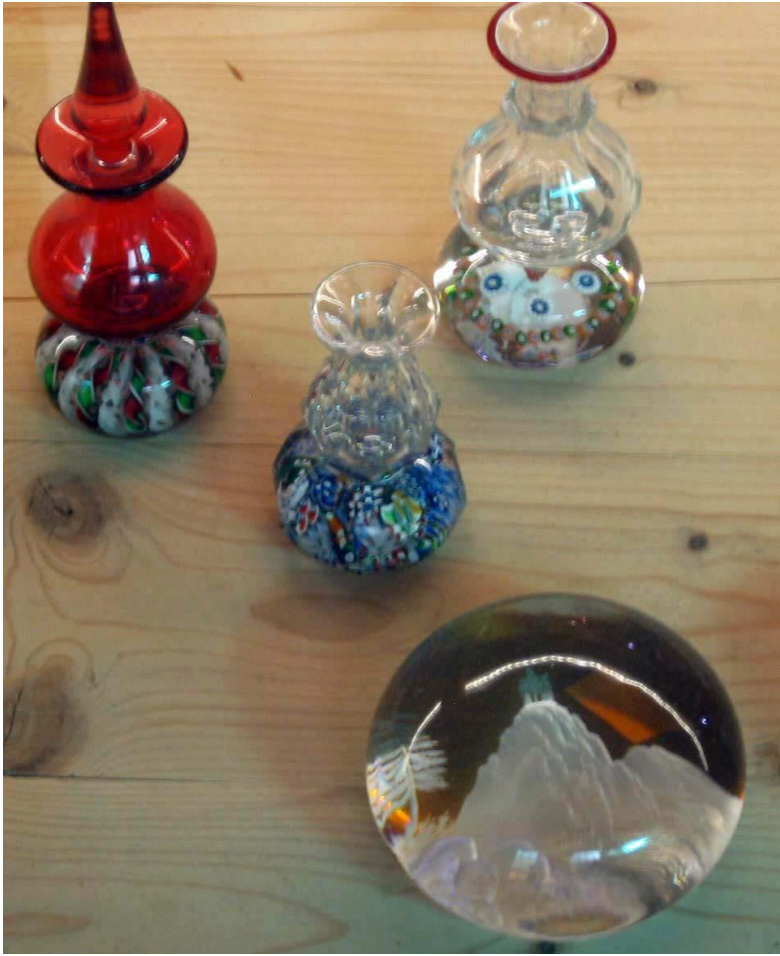




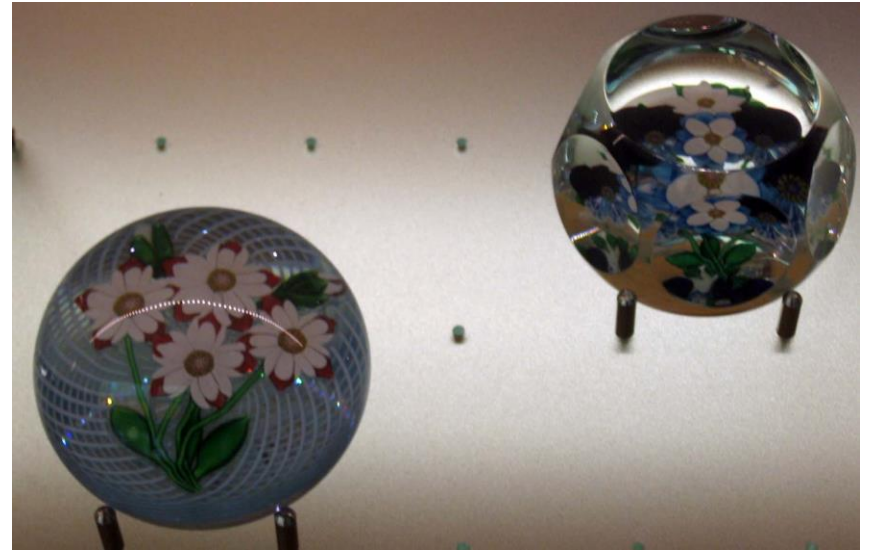




















## Bern, Switzerland

Bohemia

Ca. 1875-1890

CHF 950

CDN \$1,286



## Bern, Switzerland

Caithness  
'Moonflower'  
1980's

CHF 450

CDN \$609



## Bern, Switzerland

Caithnesss  
'Mooncrystal'  
1980's

CHF 285

CDN \$386



## Bern, Switzerland

Orient & Flume  
1978

CHF 785  
CDN \$1,063



## Bern, Switzerland

1950's

CHF 225

CDN \$305





# Musee Colette

- Housed in the XVIIIth century pavilion of the Chateau Saint-Sauveur en Puisaye
- Home of her birth in nearby village
- Palais-Royal (Paris) living quarters recreated
- Includes her paperweight collection
- Called her “*still gardens*”









































